

	PETROL 95 ULP	PETROL 93 ULP & LRP	DIESEL 0.05%	DIESEL 0.005%	ILL. PAR.
GAUTENG PUMP PRICE (SA c/l) AS FROM 05/02/2020	1,603.000	1,571.000	-	-	-
WHOLESALE PRICE (SA c/l) AS FROM 05/02/2020	-	-	1,457.260	1,462.660	924.728
SINGLE NATIONAL MAXIMUM RETAIL PRICE	-	-	-	-	1,176.000
BASIC FUEL PRICE - 26/02/2020 (SA c/l)	650.978	638.540	656.889	660.731	641.411
PRESS RELEASE CONTRIBUTION TO BFP 05/02/2020 - 26/02/2020 (SA c/l)	686.970	664.970	737.630	743.030	734.128
UNIT OVER/(UNDER) RECOVERY - 26/02/2020 (SA c/l)	35.992	26.430	80.741	82.299	92.717
AVERAGE BASIC FUEL PRICE 31/01/2020 - 26/02/2020	672.821	660.918	686.604	692.002	669.836
AVERAGE UNIT OVER/(UNDER) RECOVERY 31/01/2020 - 26/02/2020	16.201	6.105	51.815	51.818	64.765

ANALYSIS MOVEMENT OF AVERAGE OVER/(UNDER) RECOVERY

- MOVEMENT IN INTERNATIONAL PRODUCT PRICES

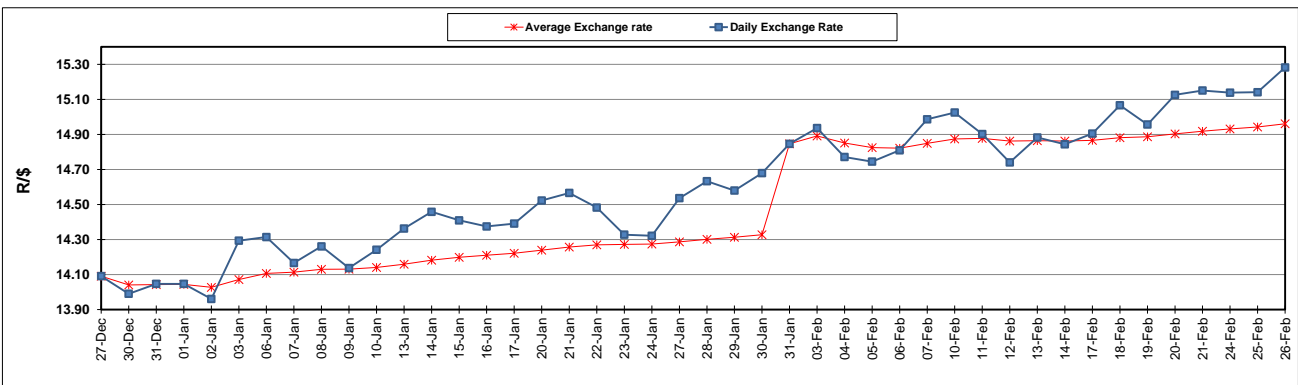
- MOVEMENT IN EXCHANGE RATE

AVERAGE UNIT OVER/(UNDER) RECOVERY 31/01/2020 - 26/02/2020

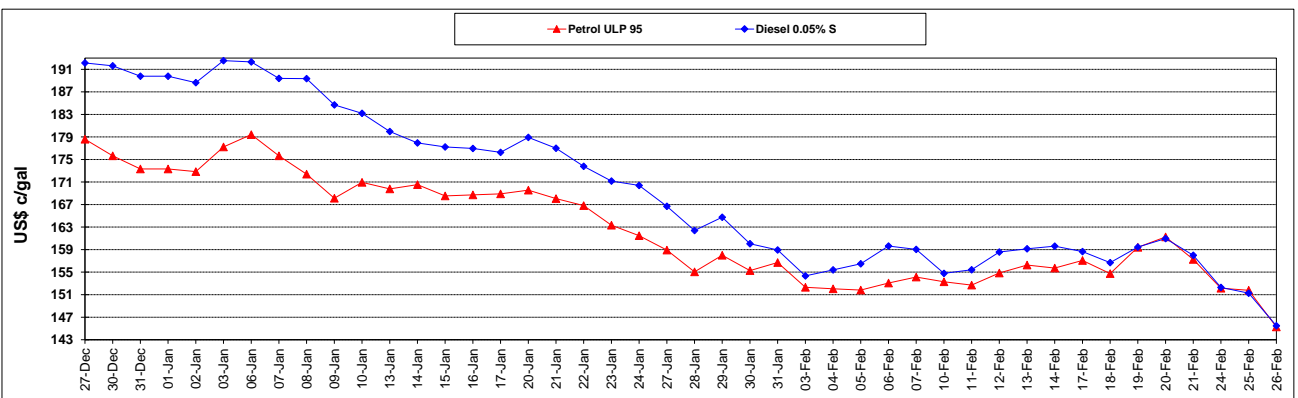
	PETROL 95	PETROL 93	DIESEL 0.05%	DIESEL 0.005%	ILL. PAR.
- MOVEMENT IN INTERNATIONAL PRODUCT PRICES	44.674	34.073	80.870	81.101	93.112
- MOVEMENT IN EXCHANGE RATE	(28.472)	(27.968)	(29.055)	(29.284)	(28.346)
AVERAGE UNIT OVER/(UNDER) RECOVERY 31/01/2020 - 26/02/2020	16.201	6.105	51.815	51.818	64.765

R/\$ EXCHANGE RATE - (R/\$15.2824 - 26/02/2020)

EXCHANGE RATE USED IN BASIC FUEL PRICE



INTERNATIONAL PRODUCT PRICES OF BASKET USED IN BASIC FUEL PRICE



BASIC FUEL PRICE IN SA CENTS PER LITRE

